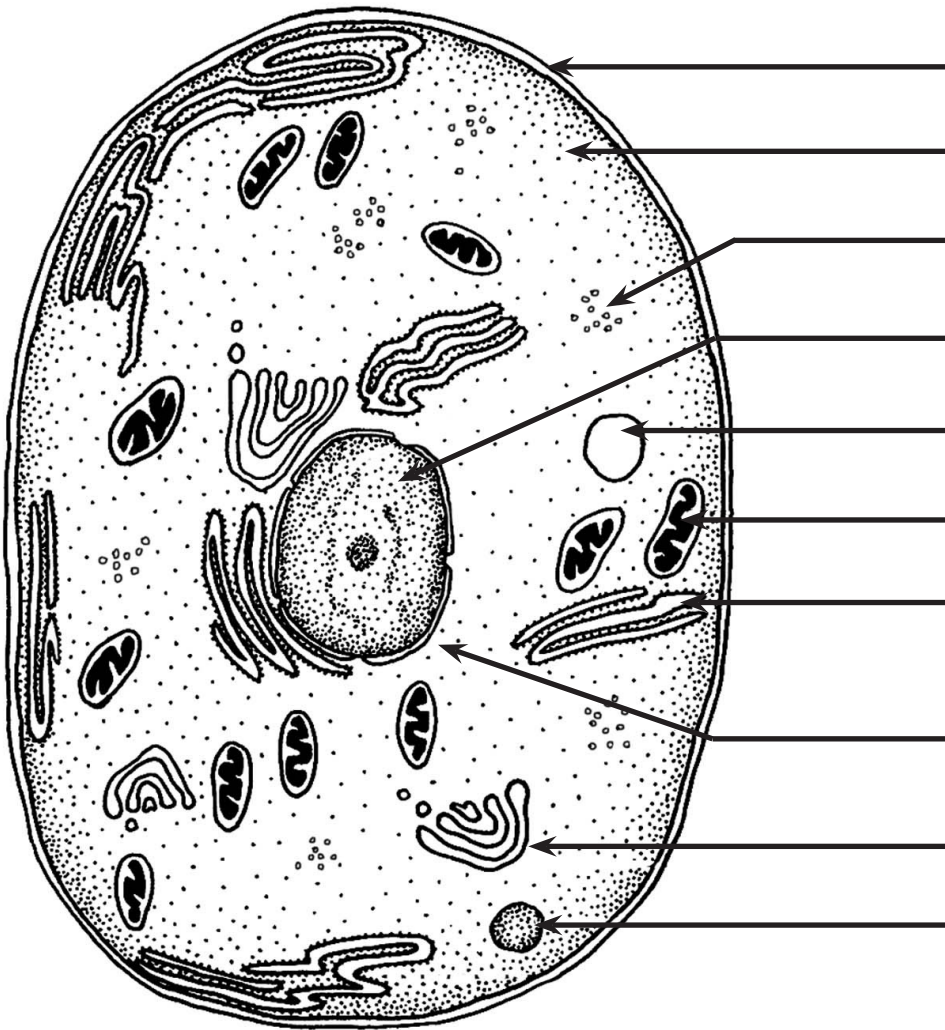


Cell Organelles Matching

Number the organelles in the cell diagram on the left AND their descriptions on the bottom.

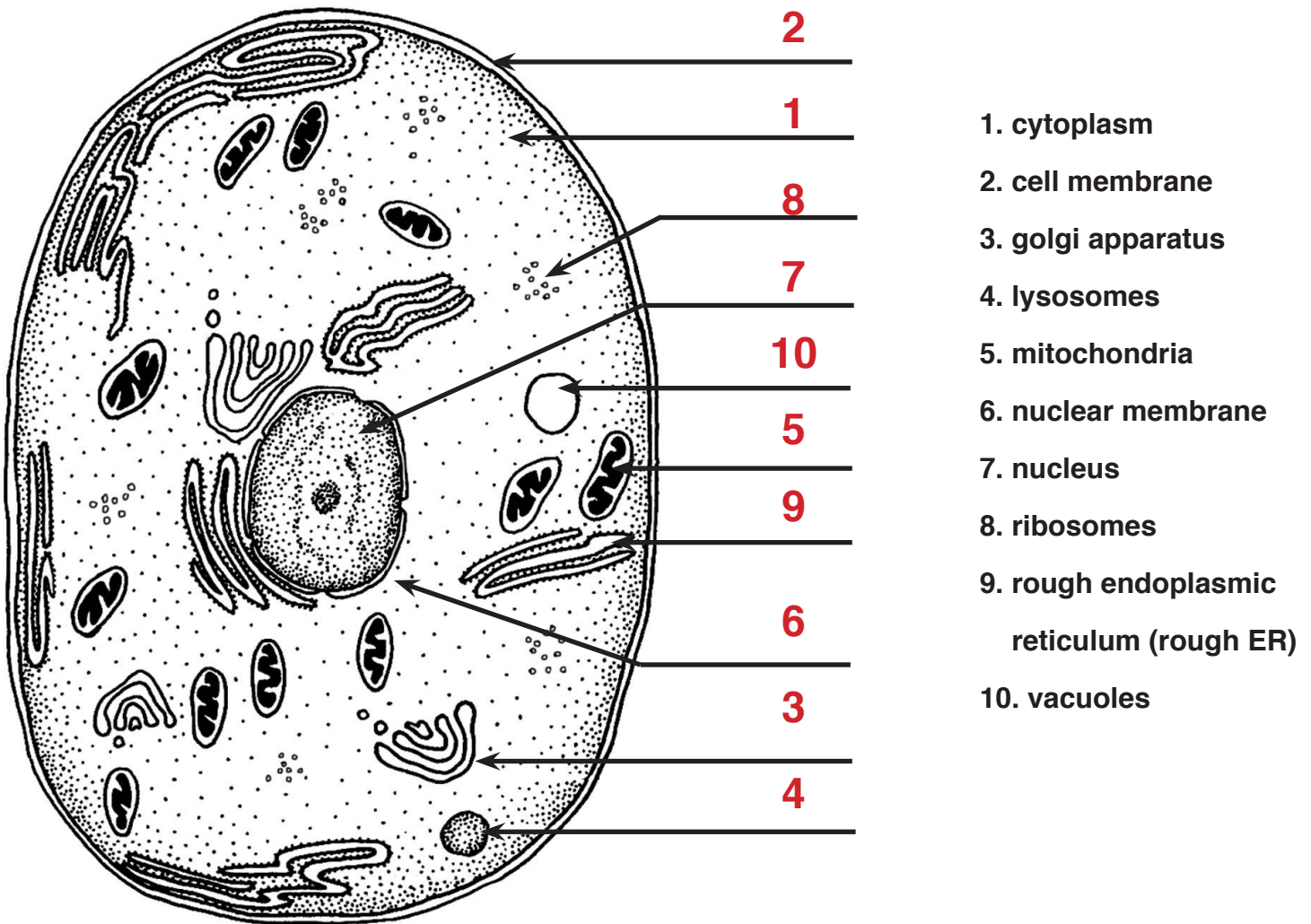


1. cytoplasm
2. cell membrane
3. golgi apparatus
4. lysosomes
5. mitochondria
6. nuclear membrane
7. nucleus
8. ribosomes
9. rough endoplasmic reticulum (rough ER)
10. vacuoles

- ___ Each cell has this protective, *semipermeable* outer layer.
- ___ Inside the cell, this watery medium is there all the organelles float.
- ___ This organelle contains our DNA with all our genetic information.
- ___ The above organelle is surrounded by this, which controls what goes in and out.
- ___ These little grains floating around inside the cell are where proteins are made.
- ___ This is made up of a series of folded membrane pathways spotted with the above organelles.
- ___ These are made up of flat vesicles that package things to be transported around or leave the cell.
- ___ These are vesicles with digestive enzymes inside that break down things the cell doesn't need.
- ___ These are membrane large membranous sacs for storing things.
- ___ These have a double membrane that folds in on itself forming little finger-like projections called *cristae*. They break down sugars to make ATP, which is used by the cell as energy.

Cell Organelles Matching KEY

Number the organelles in the cell diagram on the left AND their descriptions on the bottom.



- 2 Each cell has this protective, *semipermeable* outer layer.
- 1 Inside the cell, this watery medium is there all the organelles float.
- 7 This organelle contains our DNA with all our genetic information.
- 6 The above organelle is surrounded by this, which controls what goes in and out.
- 8 These little grains floating around inside the cell are where proteins are made.
- 9 This is made up of a series of folded membrane pathways spotted with the above organelles.
- 3 These are made up of flat vesicles that package things to be transported around or leave the cell.
- 4 These are vesicles with digestive enzymes inside that break down things the cell doesn't need.
- 10 These are membrane large membranous sacs for storing things.
- 9 These have a double membrane that folds in on itself forming little finger-like projections called *cristae*. They break down sugars to make ATP, which is used by the cell as energy.