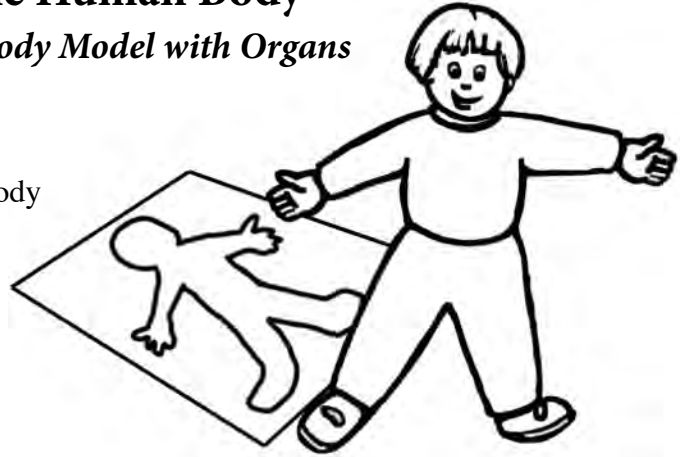


Build a Model of the Human Body

Make a Full-sized Human Body Model with Organs



Talk to students about the functions of the organs in their body and how they fit together in a working machine.

See the handout; The Human Body:

Organs and What They Do.

Materials:

Copies of the “***Build a Model of the Human Body***” sheets for each student

Roll of white mural paper cut to length for each student

scissors, crayons and glue stick for each student

Instructions:

1. Use the ***Digestive System Organs Coloring and Labeling Pages***, the ***Respiratory System Overview Diagrams, Heart Anatomy*** and ***Blood Flow Diagrams*** to help students learn the relative size, position, and function of each organ in the human body.
2. Copy enough organ sheets for each student to have a set.
3. Instruct them to color, label, and cut out each organ.
4. Get a large roll of paper (3 foot wide).
5. Cut off lengths about the heights of your students.
6. Instruct each student lie down on a length paper and trace their outline with a permanent marker and have them write their name on their body sheet.
7. Instruct them place their organs in the right places on their body outlines. Use glue sticks to secure organs in place.
8. Hang them in the hall to share with the rest of the school.

NGSS: Disciplinary Core Ideas

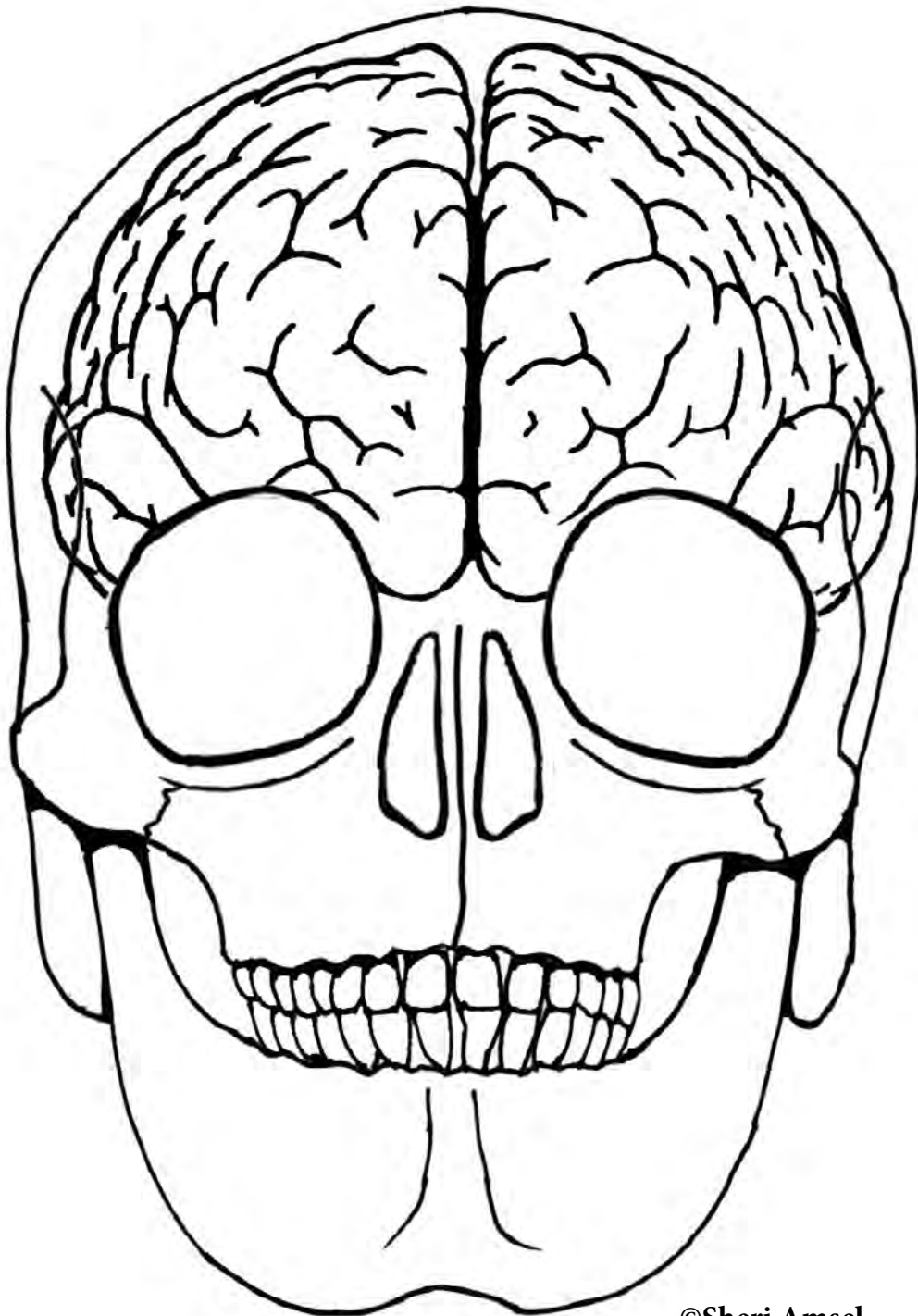
LS1.A: Structure and Function

• Plants and animals have both internal and external structures that serve various functions in growth, survival, behavior, and reproduction. (4-LS1-1)

Performance Expectations Students who demonstrate understanding can:

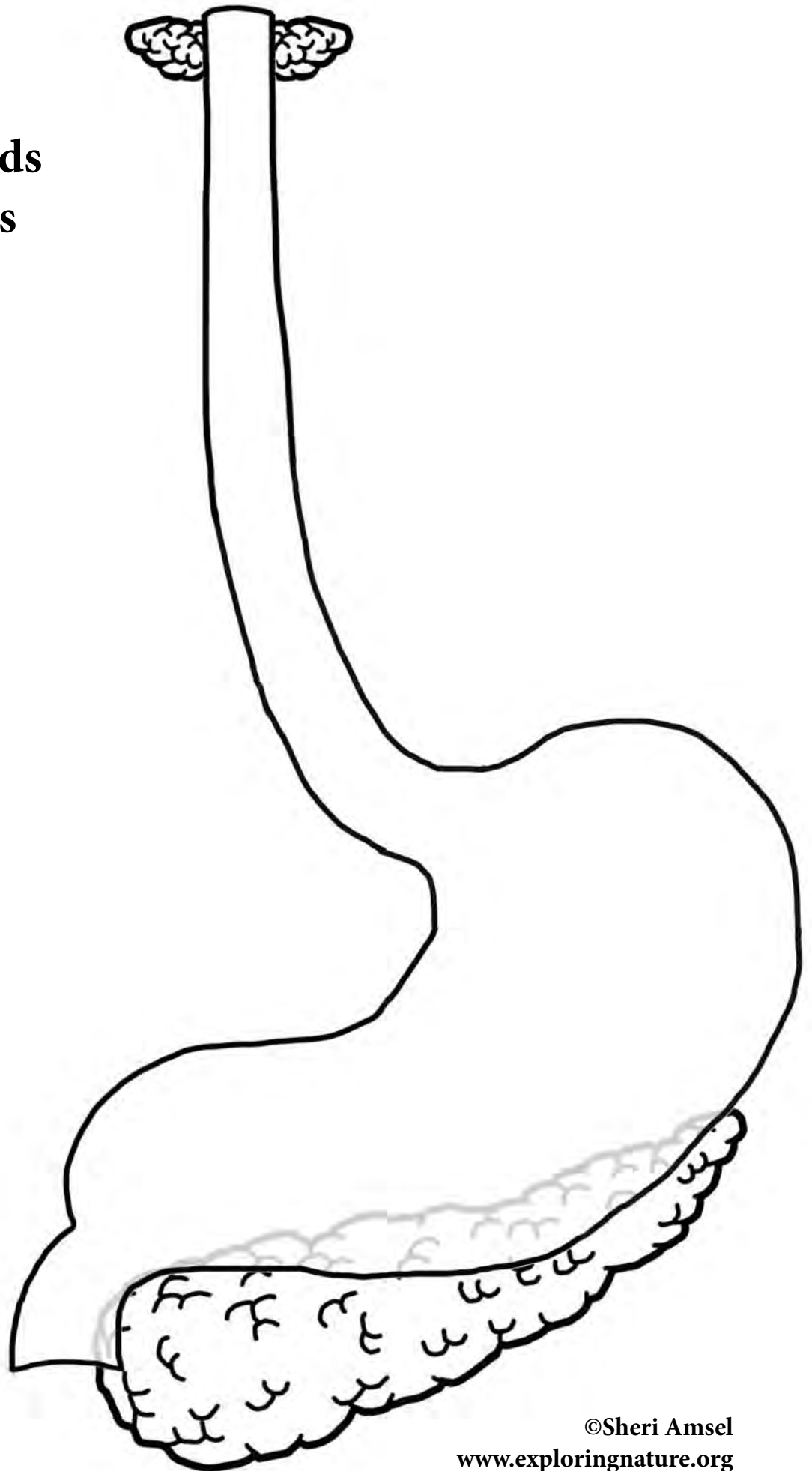
4-LS1-1. Construct an argument that plants and animals have internal and external structures that function to support survival, growth, behavior, and reproduction. [Clarification Statement: Examples of structures could include thorns, stems, roots, colored petals, heart, stomach, lung, brain, and skin.] [Assessment Boundary: Assessment is limited to macroscopic structures within plant and animal systems.]

Skull and Brain

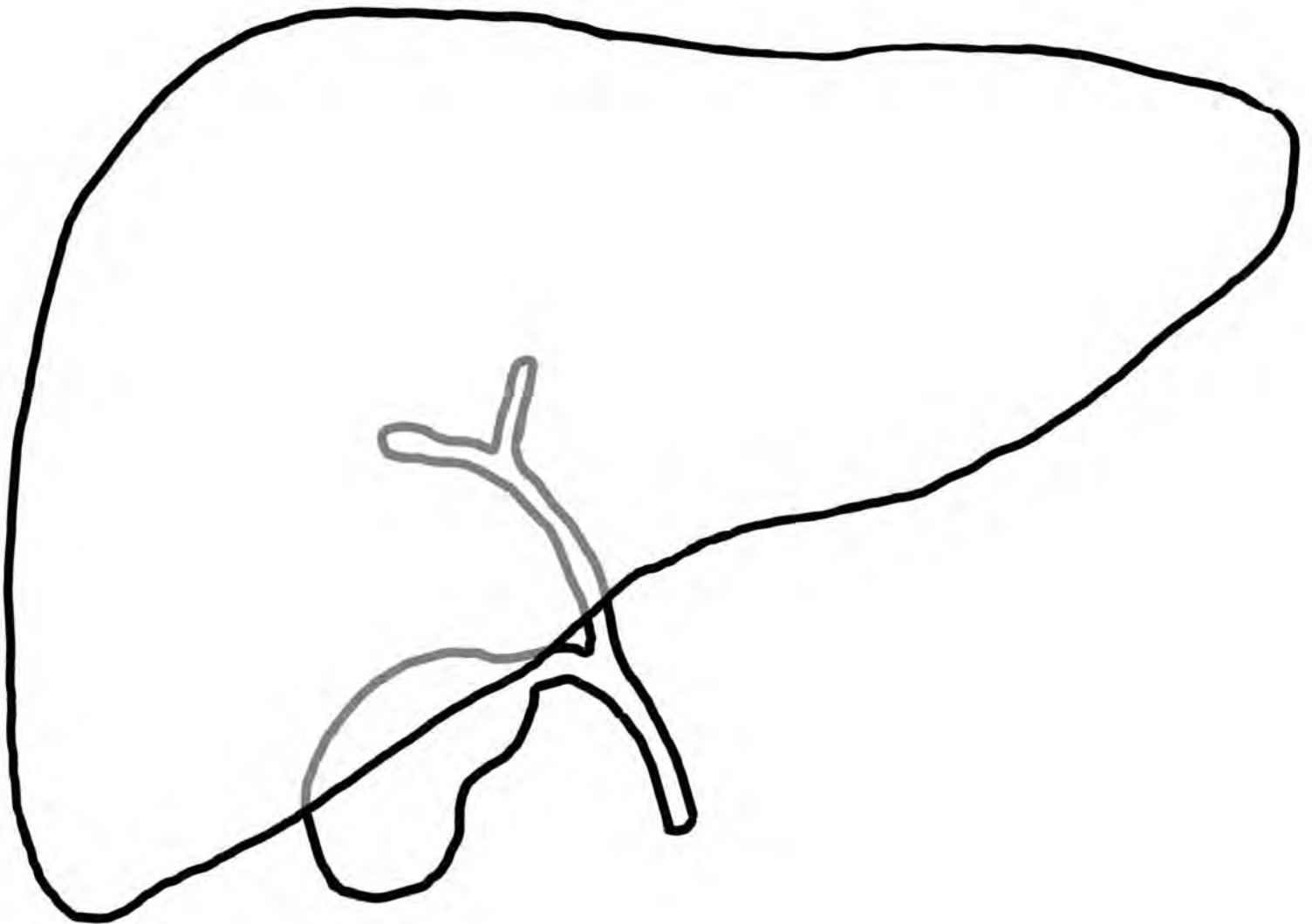


©Sheri Amsel
www.exploringnature.org

**Stomach,
Esophagus,
Salivary Glands
and Pancreas**

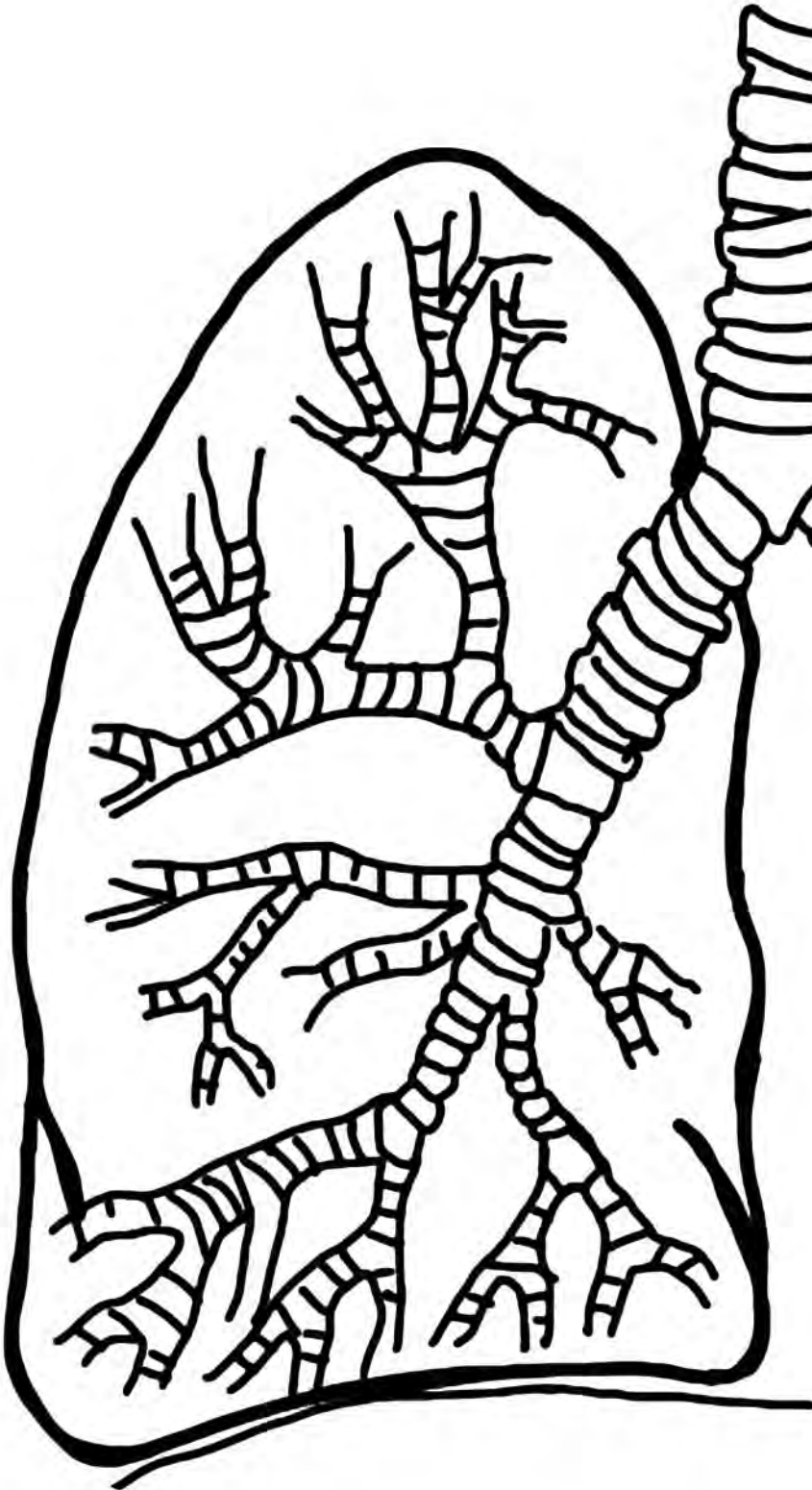


Liver and Gall Bladder

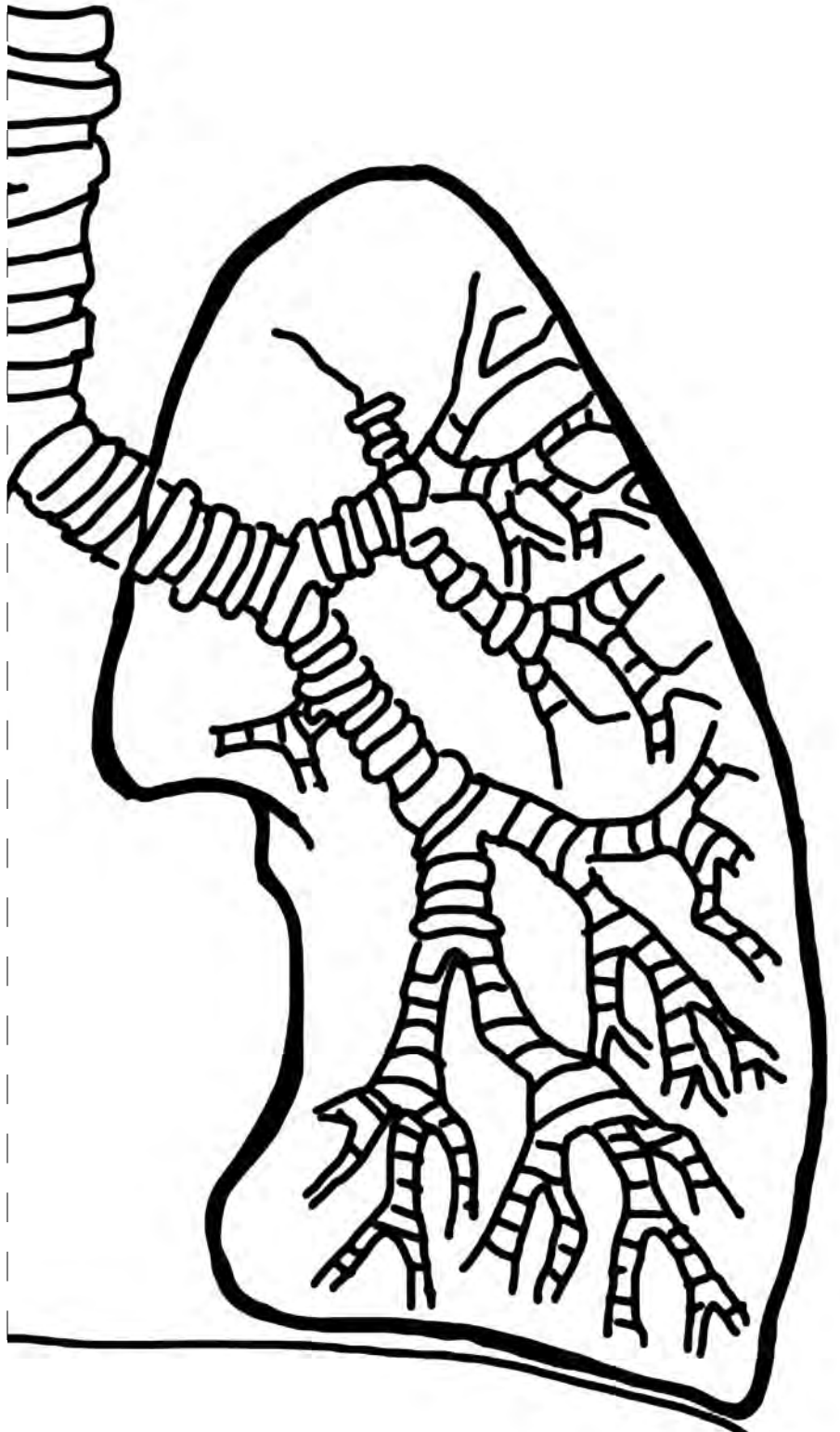


©Sheri Amsel
www.exploringnature.org

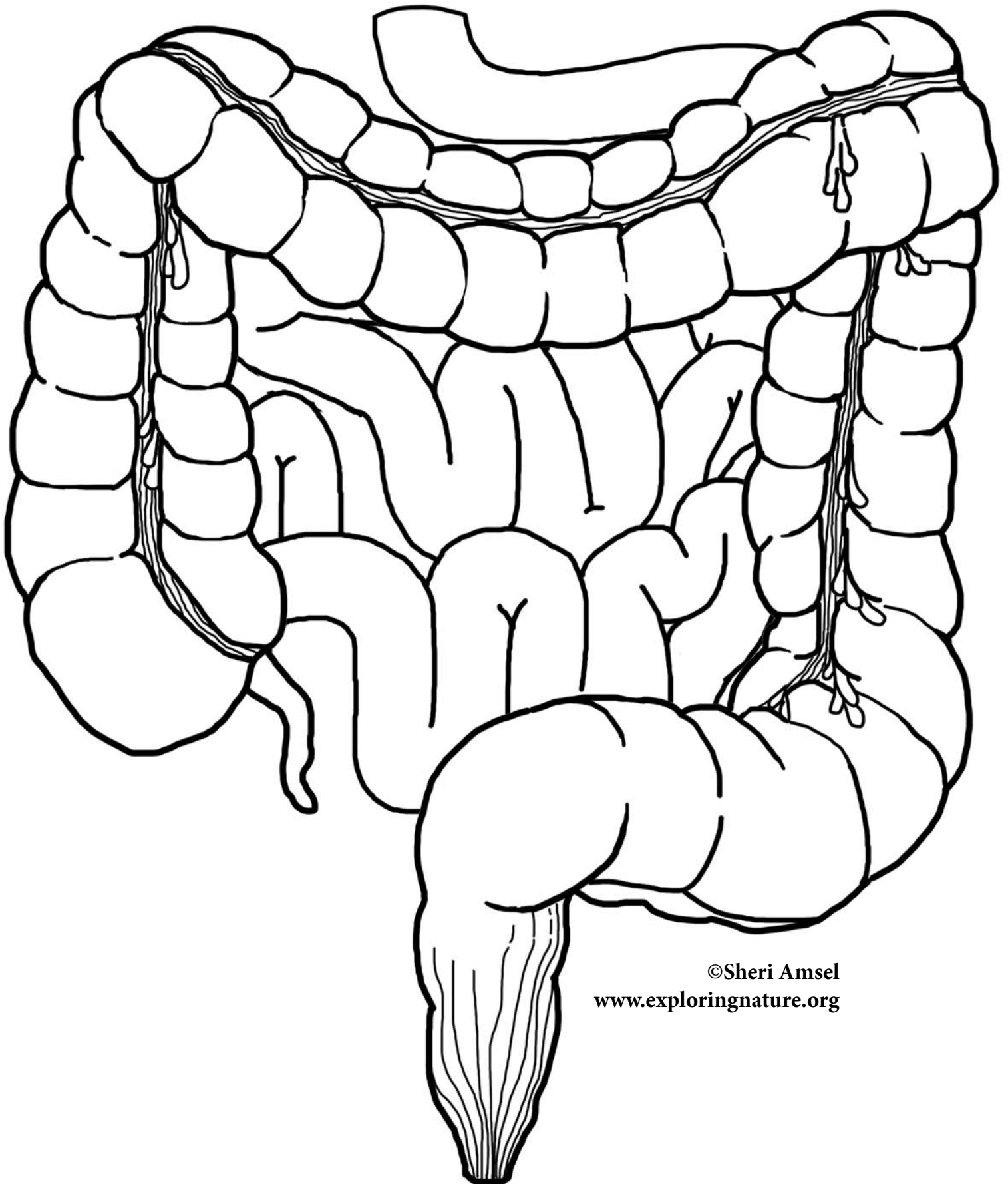
Right Lung with Half Trachea and Bronchi



Left Lung with Half Trachea and Bronchi



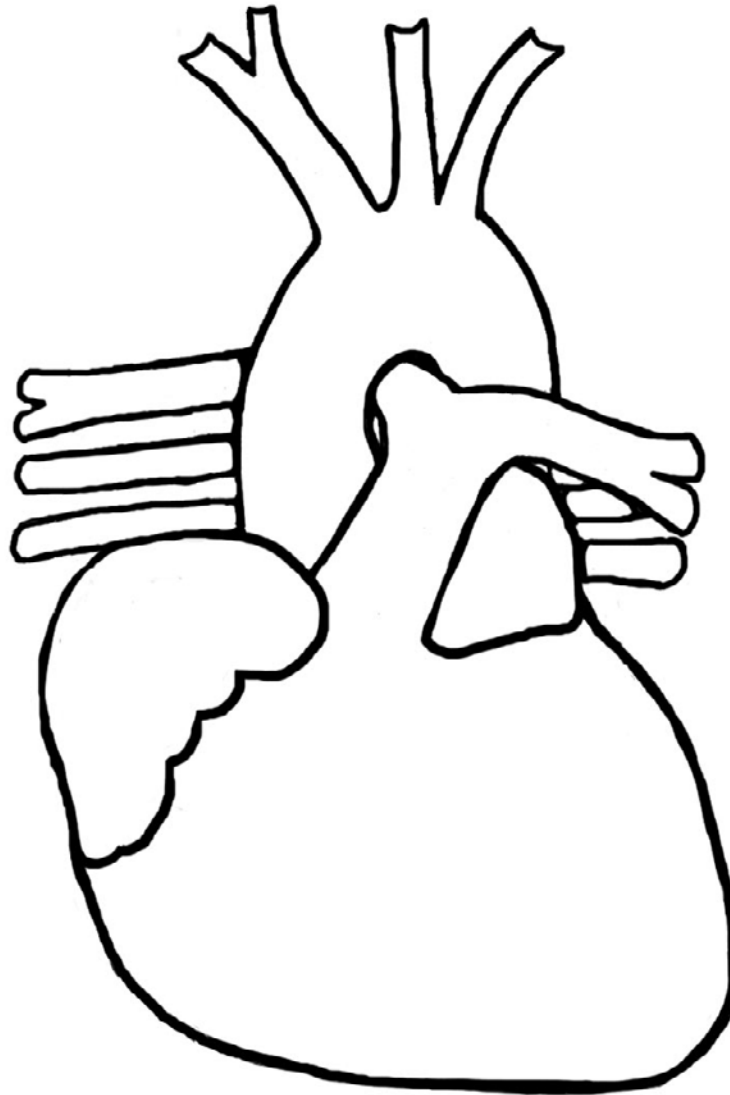
Small Intestine, Large Intestine (Colon), Appendix



©Sheri Amsel

www.exploringnature.org

Heart, Aorta, Arteries and Veins



©Sheri Amsel
www.exploringnature.org