

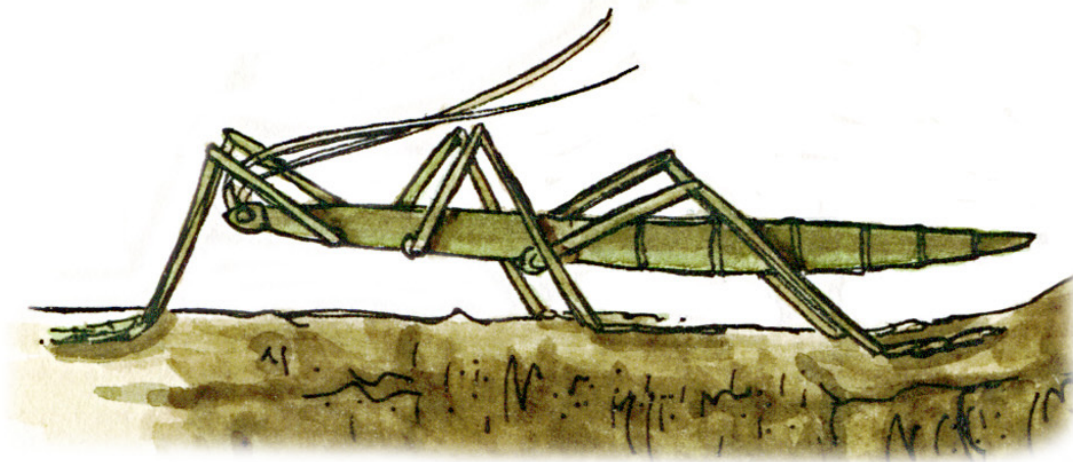
Adaptations of the Walkingstick Insect

Adaptation in a *population* of living things happens as a result of an *adaptive trait*. This is any *inheritable trait* that increases its survival rate so that it can live longer, reproduce longer, and have more offspring (that also have that trait). Adaptive traits can improve animals find food, make a safer home, escape predators, survive cold or heat or lack of water.

The **walkingstick** has some effective *adaptive traits*. Their twig-like body, long, thin legs and long antennae help them blend in with the twigs and branches where they feed. Their brownish-green color also acts as camouflage and makes it hard to see them when they are feeding on leaves in the trees. These *physical adaptations* help them survive in their forest habitat.

Adaptations of the Walkingstick

The walkingstick's twig-like body, long, thin legs and long antennae helps them blend in with the twigs and branches where they feed.



The walkingstick's brownish-green color acts as camouflage and makes it hard to see when it is feeding on leaves in the trees.

For Discussion and Critical Thinking:

The walkingstick insect has adaptive traits that help it to survive in its habitat.

1. Name two of the walkingstick's physical adaptations and how they help it survive:

1. _____

2. _____

2. Name two other insects from your yard, local parks or wild areas (forests, prairies, wetlands, etc.) who use camouflage to hide from predators or prey.

1. _____

2. _____

3. Name two different habitats near your home and what you might wear to blend into them:

1. _____

2. _____
