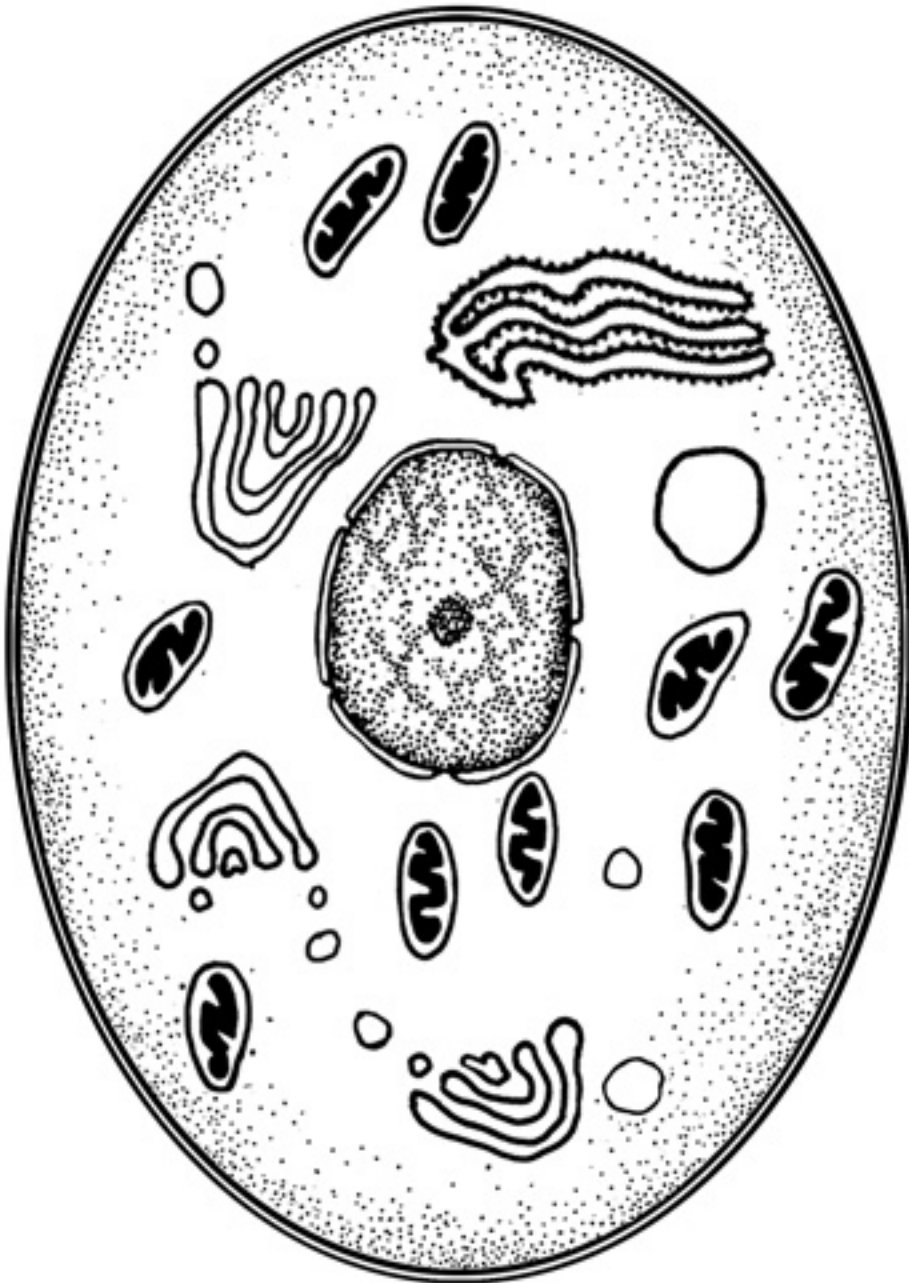


# Color the Animal Cell



# Color the

## Blood Vessels



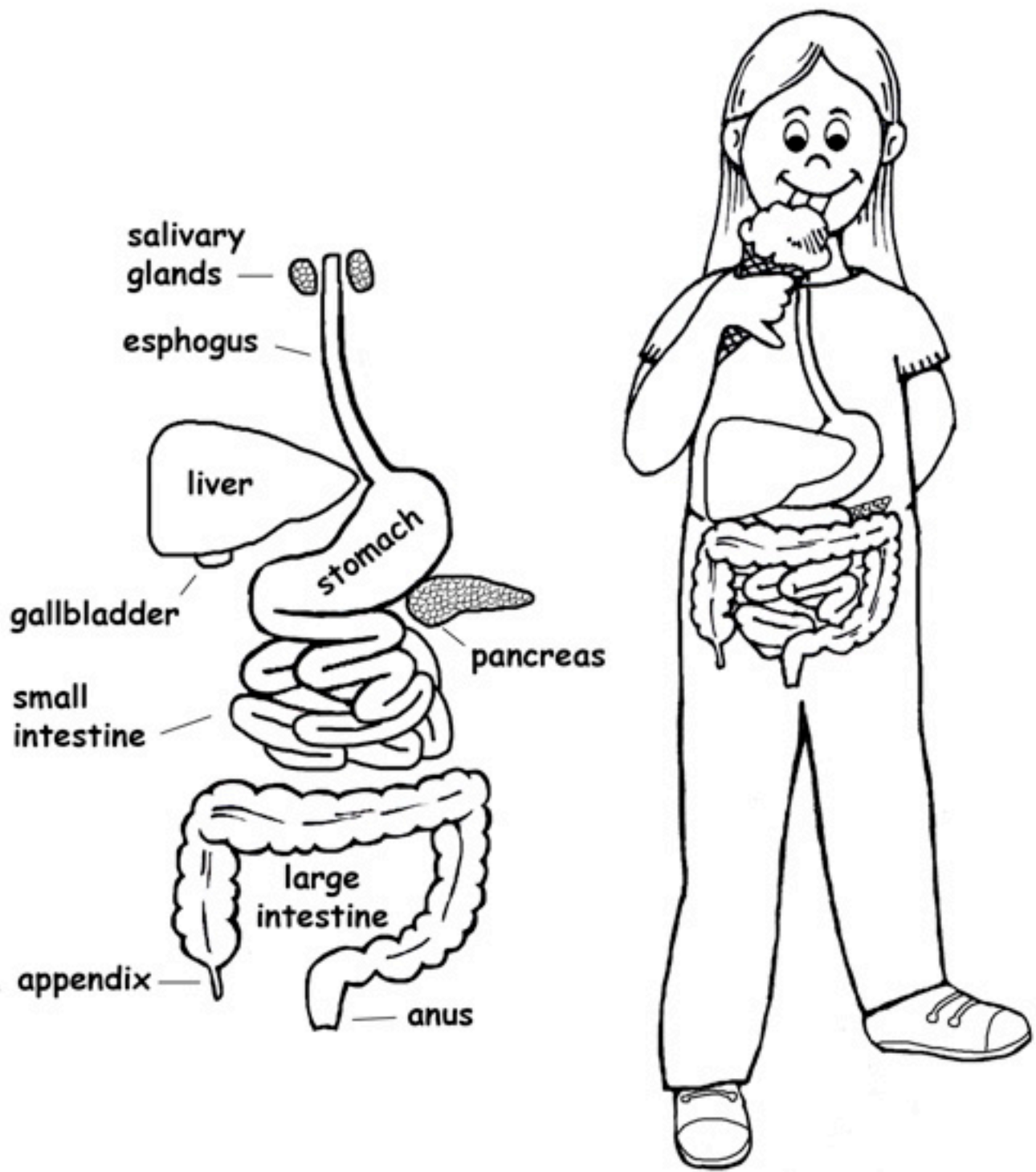
### The Arteries

- carotid artery (to head)
- subclavian artery (in shoulder) becomes axillary (in armpit) which becomes brachial artery (in upper arm) then splits into radial artery (to outside of arm) and ulnar artery (to inside of arm)
- arch of the aorta becomes
- abdominal aorta (to organs) then splits to iliac arteries (to pelvic region) and become femoral artery (to legs) then splits into tibial arteries (to legs and feet)

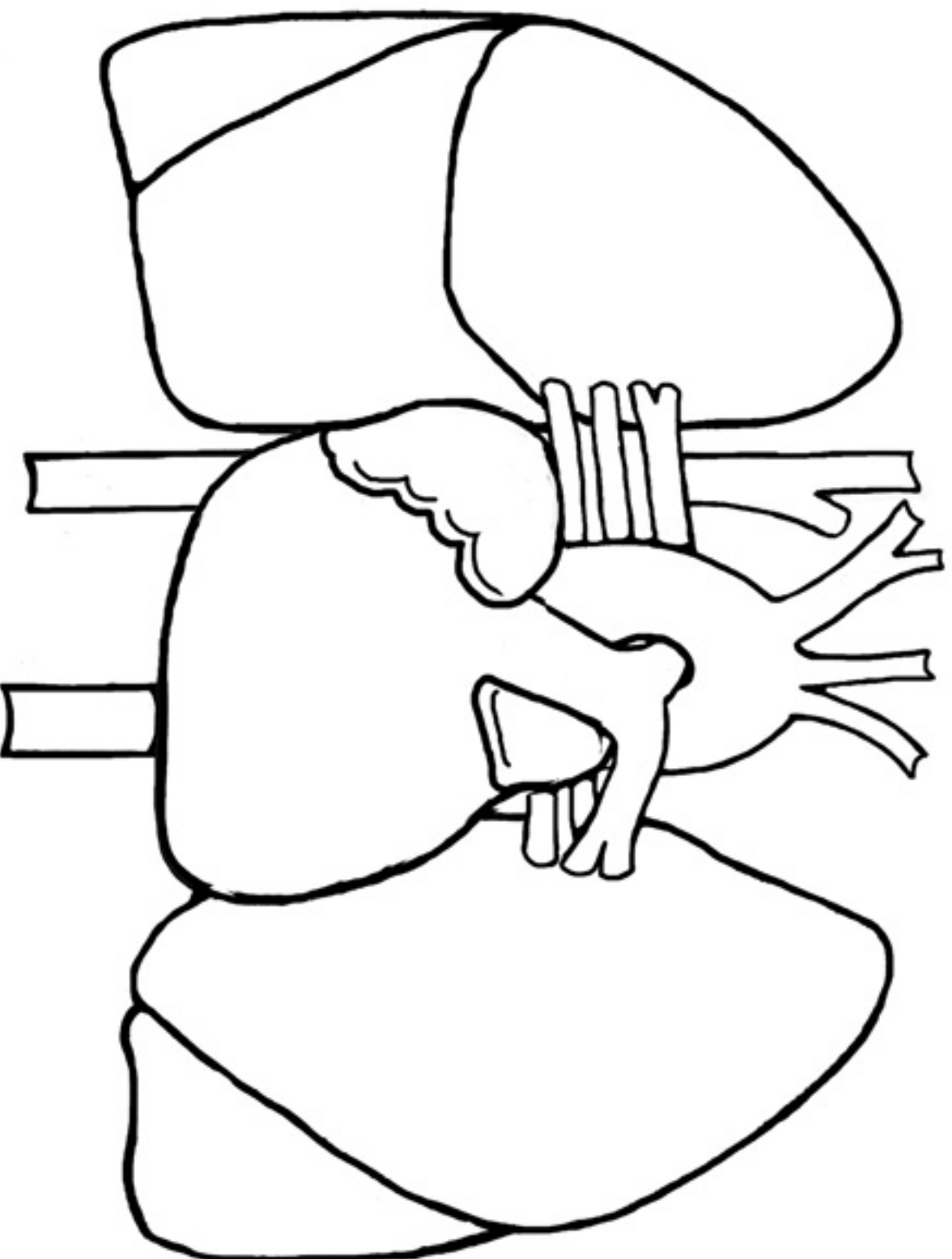
# Color the Circulatory System



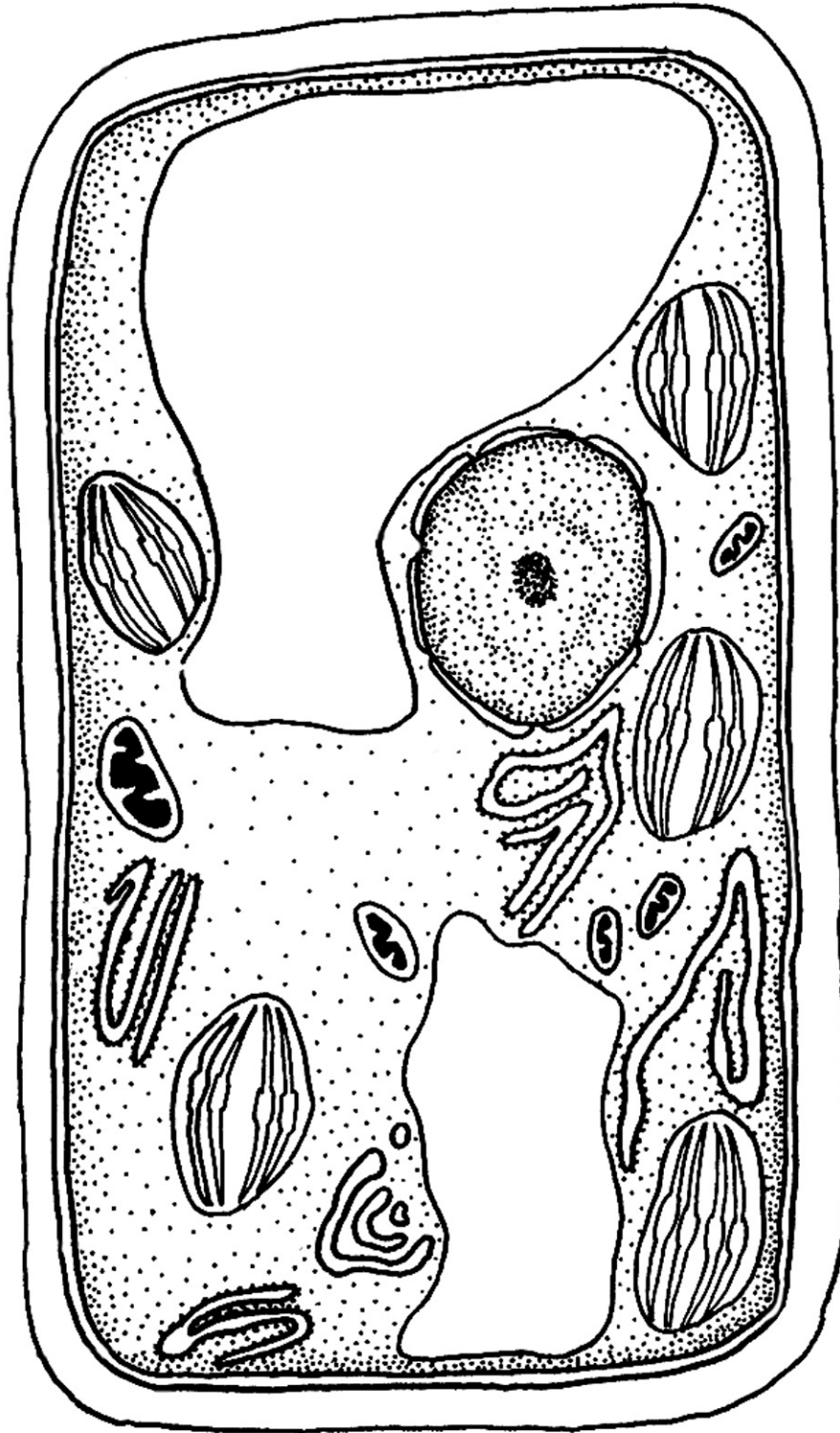
# Color the Digestive Tract



# Color the Heart and Lungs



# Color the Plant Cell



# Color the Skeletal System

